

N.E. 1/4 OF
SECTION 33, T.7N., R.1W., S.L.B. & M.

IN NORTH OGDEN CITY & WEBER COUNTY

PREFIX: 17-073

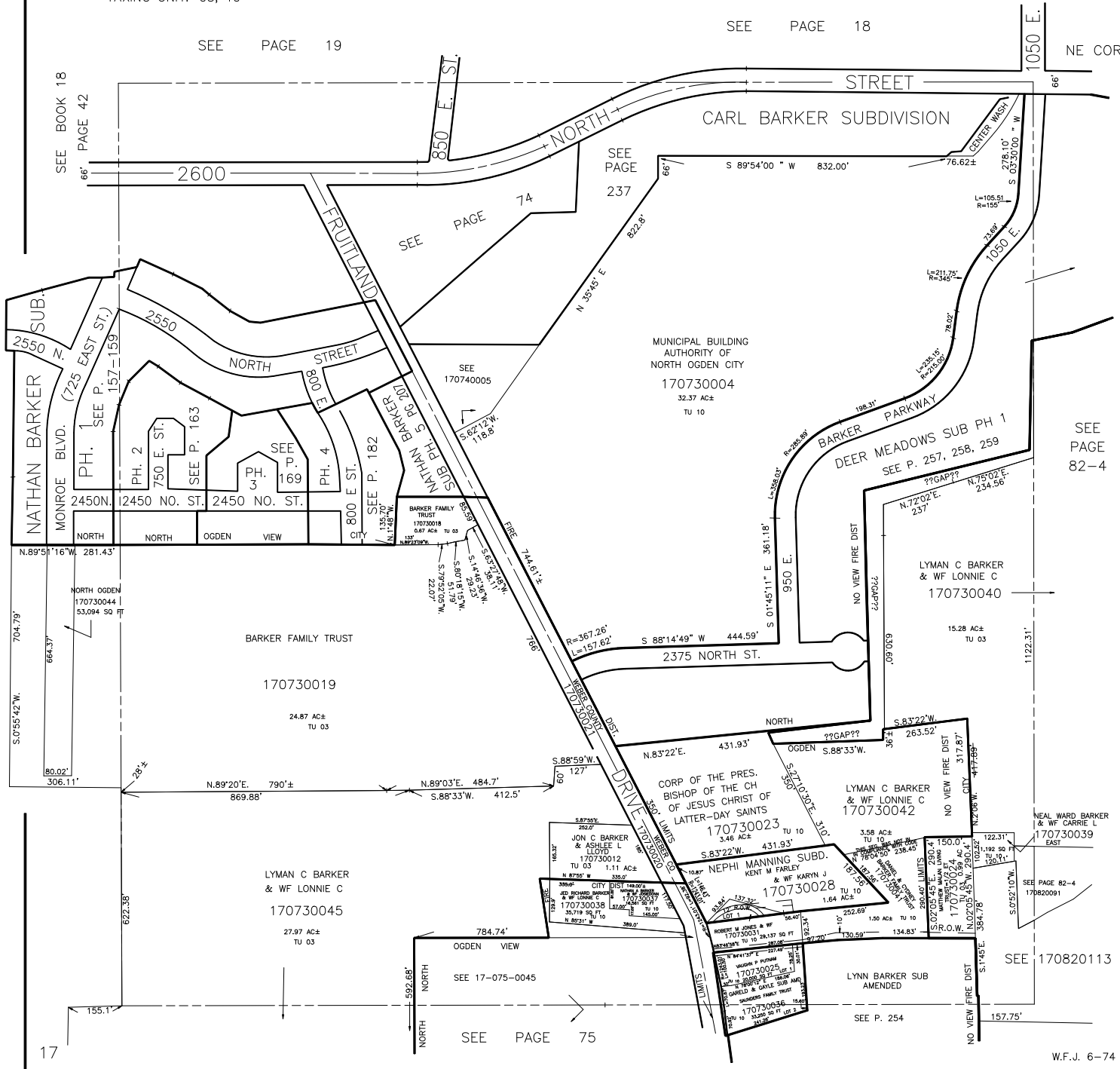
TAXING UNIT: 03, 10

SCALE 1" = 200'

SEE PAGE 19

SEE PAGE 18

NE COR SEC 33



SEE BOOK 18
PAGE 42

NATHAN BARKER SUB.
MONROE BLVD. (725 EAST ST.)
PH. 1
SEE P. 157-159

PH. 2
750 E. ST.
SEE P. 163

PH. 3
2450 N. ST.

PH. 4
2450 N. ST.

PH. 5
2450 N. ST.

PH. 6
2450 N. ST.

PH. 7
2450 N. ST.

PH. 8
2450 N. ST.

PH. 9
2450 N. ST.

PH. 10
2450 N. ST.

PH. 11
2450 N. ST.

PH. 12
2450 N. ST.

PH. 13
2450 N. ST.

SEE PAGE 75

SEE 170820113